

Prospectus

Farsley Farfield Primary School



2024-5



Welcome to our school...



Farsley Farfield
Primary School



We are very proud of our school. Farsley Farfield Primary School has a huge amount to offer your child: unique qualities will combine to offer an engaging, rich high quality education for your child.

We are a popular, inclusive, diverse 'good' school with strong academic standards and a very broad curriculum. We were declared **national** 'Healthy School of the Year' in 2017 thanks to our fantastic provision in PE, horticulture and cooking. Our grounds are amazing!

There is no substitute for coming to the school and seeing for yourself – schools have changed since we were children! Please contact us and we will be delighted to show you around and discuss your child's future at Farfield.

Very best wishes,

Peter Harris
Headteacher

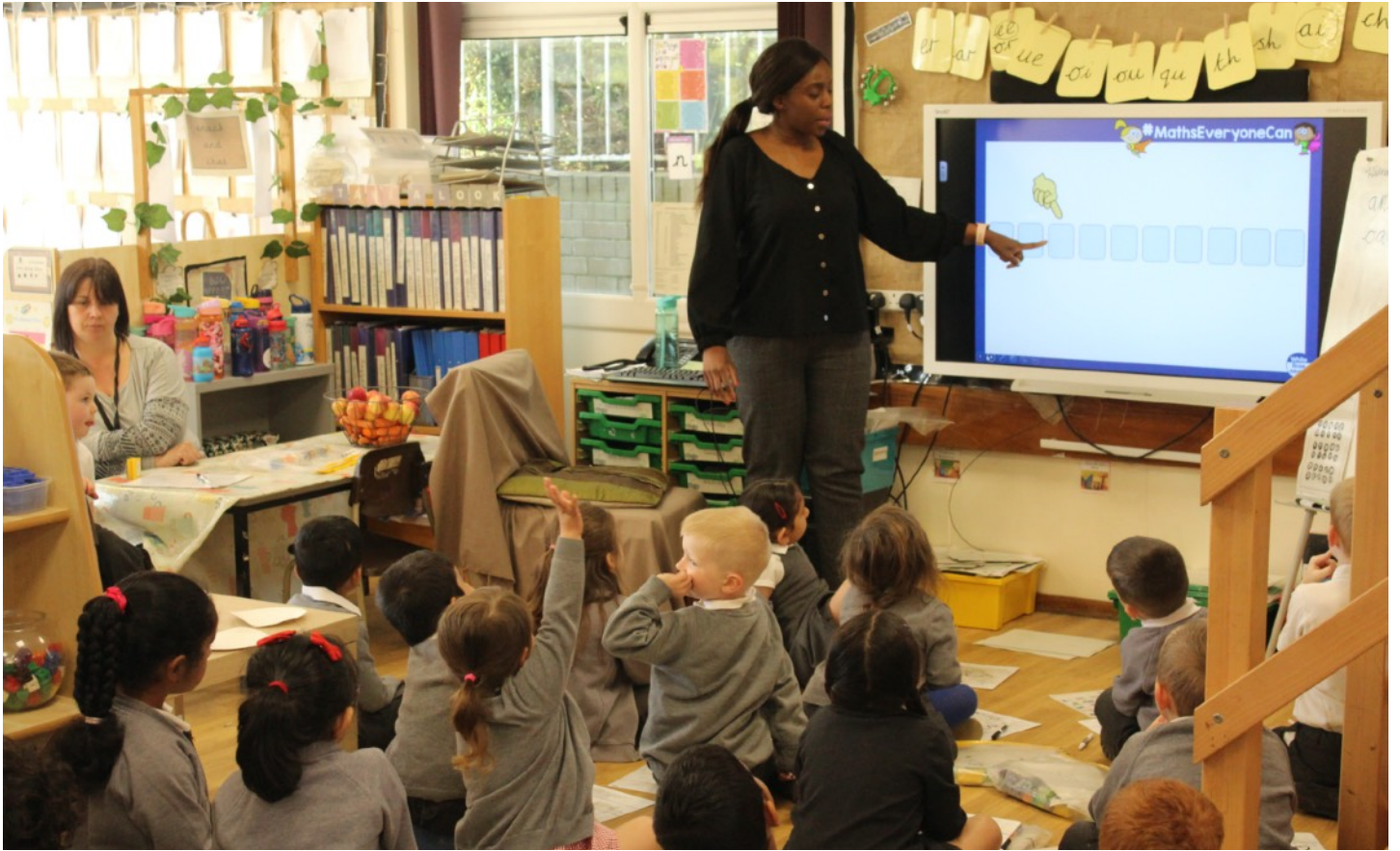


Key reasons to choose Farsley Farfield

- Highly skilled, committed, caring staff;
- Happy, well-mannered, motivated children;
- A rich cultural mix and inclusive ethos;
- Strong academic standards;
- Outstanding school grounds including a locally unique 'farm';
- Wonderful extra-curricular opportunities;
- A wide range of sporting activities and teams;
- A firm commitment to the arts;
- Strong IT throughout the school, 1:1 Chromebooks in Y3-6 and outstanding website/blogs;
- A love of 'school trips' and three of our own school minibuses to get out and about;
- A very strong culture of safeguarding;
- A close working relationship with our Children's Centre, private nursery, 'Fun Club' and local childminders;
- National Healthy School of the Year 2017;
- A superb PTA



Foundation Stage



Our Foundation Stage is a fabulous place for any child to start their education. Consisting of spacious Nursery and Reception classrooms, the Foundation Stage has a very creative and play-based curriculum. Areas of provision are carefully planned to provide your child with a broad range of experiences; some of these are adult-led, many of these are self-directed. Much of the planning in Foundation Stage is 'in the moment': focussing on the interests of the child and developing their ideas with them.

This is supplemented by teacher-planned input, group phonics and sessions teaching early number skills.

We have a 26 place Nursery for 3-year-olds with children typically attending either 15 or 30 hours per week. A child might attend the morning session, 8.45am-11.45am or the afternoon session, 12.30pm-3.30 pm or stay all day. You can arrange with our on-site private nursery 'Little People' (or a childminder) for your child to be taken to Nursery (or any other year group) and be collected as necessary.

"XXXX has had an amazing first year and we have been very impressed with his teachers and overall standard of all staff we encountered at the school during the term. It's evident every one works hard and we are really happy XXXX attends Farfield!"

Parent of Reception child 2024

"XXXX has had a super start to his school life with his first year in reception. ...impressed by the wide range of experiences, activities and trips....It's clear to see the school is led and staffed by individuals who care about the children and the education/childhood they are given."

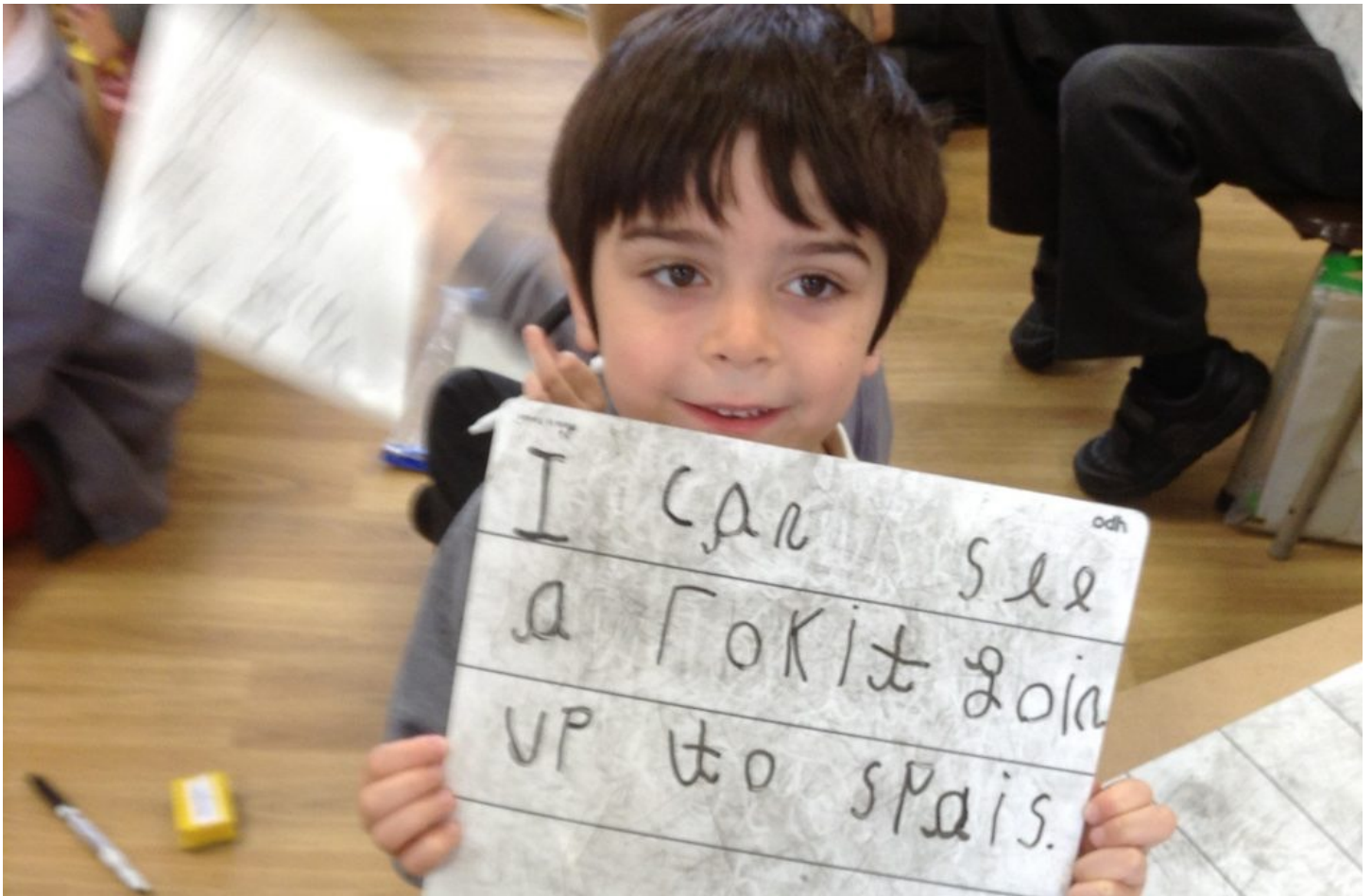
Parent of Reception child 2024

"The level of communication from school to parents is nothing short of incredible- in particular the weekly round up shared on a Friday. "

Parent of Reception child 2024

"From a parent of a child on the spectrum, I cannot praise the school and staff enough for the ongoing support they have given to XXXX and myself."

Parent of Reception child 2024



The Reception classes build upon the curriculum as established in the Nursery. By the end of this Reception year, your child should have reached a 'Good Level of Development', and be well prepared for the increasingly demanding curriculum of Key Stage 1. Children have on-going access to a wide range of imaginative outdoor spaces. Fresh air and the stimulation of senses and the enquiring mind are cornerstones of our vision for early years education.

"In early years, children develop respectful relationships and talk confidently with their peers and with adults. The early years curriculum supports children's language and communication skills. Adults model positive ways in which children can interact with others. "

OFSTED 2023

Our Learning Hive

Our 'Farfield Learning Hive' pulls together key aspects of a child's personal development in our school and forms the basis of many assemblies, rewards and sanctions.





Key Stages 1 and 2

We are a split site school on one large campus. The North building consists of the Foundation Stage and four Infant Key Stage 1 classes. The South building is made up of eight Junior Key Stage 2 classes. We take 60 children in each cohort, split into two classes of thirty.

The North building has very large classrooms, its own hall and dining room, plus plenty of different playground spaces. There is a conservation area and sensory garden. The infant school day is from 8.45am - 3.15pm.

“Farsley Farfield Primary School is a vibrant and happy place to learn.”

OFSTED 2023

“The school has developed an exciting curriculum that brings learning to life for pupils.”

OFSTED 2023

“An amazing school with amazing staff, it's that simple “

Parent of Y4 child

“Farfield remains to be a fantastic school and we will always sing its praises and recommend to others with pre-school children. “

Parent of Y5 child





The main Key Stage 2 classrooms are large and well resourced. There is a principal school hall, a 'studio' space used for cooking and other lessons, a 'Farm' classroom and greenhouse. We have a large pastoral space and all-weather courtyard.

The Junior school day runs from 8.40am - 3.20pm.

Academic standards at the end of Key Stage 2 are strong (see Academic Standards).

"Choosing Farfield as primary school is the best decision we made."

Year 6 parent after 7 years

"An outstanding school created by outstanding staff."

Y3 parent

"Fantastic school, full of rich experiences both at school and outside of school."

Y3 parent

Leaders in Learning with IT

Farfield makes the best use of IT to enhance teaching and learning, and to provide our children with crucial skills for the future. To this end, children in Y3-6 are given their own 1:1 Chromebook computer for use **in school and at home**. (Infant children have much less access to IT for personal use. This is a deliberate choice, particularly in Foundation Stage.)

Many of our KS2 teachers are Google Certified Educators.

Access to the internet is strongly filtered and monitored.



Google for Education
Certified Educator



Academic Standards

Our academic standards are typically at national averages or above, and we usually have a greater proportion at 'greater depth' standards. In 2024, the proportion of Y6 children reaching 'greater depth' standards in each of reading, Writing and Mathematics, places us in the top 5% of schools by this measure.

Key Stage 2

| Subject | Statistic | 2018-2019 | | 2021-2022 | | 2022-2023 | | 2023-2024 | | |
|-----------------------------------|---|-----------|----------|-----------|----------|-----------|----------|-----------|---------|----------|
| | | School | National | School | National | School | National | Cohort | School | National |
| Reading, Writing & Maths combined | % of pupils achieving the expected standard | 62% 🕒 | 65% | 72% + | 59% | 65% ● | 60% | 58 | 64% ● | 61% |
| Reading, Writing & Maths combined | % of pupils achieving the higher standard | 10% 🕒 | 11% | 7% ● | 7% | 12% ● | 8% | 58 | 22% ● | ~ 7% |
| Reading | % of pupils achieving the expected standard | 75% 🕒 | 73% | 82% ● | 74% | 75% ● | 73% | 58 | 76% ● | 74% |
| Reading | % of pupils achieving the higher standard | 30% 🕒 | 27% | 39% ● | 28% | 42% + | 29% | 58 | 41% + | ~ 28% |
| Reading | Average scaled score | 104.0 🕒 | 104.0 | 107.0 + | 105.0 | 106.6 ● | 105.0 | 58 | 106.3 ● | 105.0 |
| Writing | % of pupils achieving the expected standard | 75% 🕒 | 78% | 80% ● | 69% | 78% ● | 71% | 58 | 79% ● | 72% |
| Writing | % of pupils working at greater depth | 15% 🕒 | 20% | 8% 🟠 | 13% | 17% ● | 13% | 58 | 22% + | ~ 12% |
| Maths | % of pupils achieving the expected standard | 70% 🕒 | 79% | 80% ● | 71% | 74% ● | 73% | 58 | 81% ● | 73% |
| Maths | % of pupils achieving the higher standard | 26% 🕒 | 27% | 34% + | 22% | 32% ● | 24% | 58 | 38% + | ~ 23% |
| Maths | Average scaled score | 103.0 🕒 | 105.0 | 107.0 + | 104.0 | 104.4 ● | 104.0 | 58 | 106.9 + | 104.0 |



PE and Sport

Farsley Farfield is a very strong sporting school. We provide a broad curriculum for all children both through PE lessons during school time and our wide variety of sporting activities out of school hours. We take part in many sporting competitions and run a number of football league teams - the only school in the area to do so. Our curriculum for outdoor and adventurous activity is outstanding!

In 2016, we were awarded a city-wide prize for innovation in PE and in 2017 we were the national Healthy School of the Year!

Our school grounds are second-to-none locally: we have huge fields, two artificial cricket wickets (and nets), four mini-tennis courts and plenty of space for cycling.

If your child enjoys physical activity, Farfield is a great choice!





If your child enjoys sports and physical activity, they will enjoy Farfield.

In Key Stage 2, our three minibuses allow us to regularly use local specialist sports facilities such as Nile Wilson Gymnastics, Rawdon Tennis Club and The Depot Climbing Wall.

We also have two residentials in the Dales including mountain biking, caving, climbing, abseiling and gorge-scrambling.



**“Outstanding”
LCC Health and
Safety Team
assessments of
Farfield Residentials**



The Great Outdoors

The school's huge grounds are magnificent, and a literal breath of fresh air in these days of concrete and congestion. We have a huge number of trees, areas of long grass, sports pitches, a conservation area with a pond and a range of habitats. We have plenty of space for dens and an inexhaustible supply of sticks!

Infants have a fort, 'tyre park', slide and climbing frame. We have an exciting 'tree house' close to the Junior yard, outdoor gym and willow tunnel.

Whenever possible, children get onto the grass at playtime, thus promoting a healthy, active lifestyle. Some children may, occasionally, come home a little muddy – wellies are essential!



**"Outside provision at this school is outstanding."
External Healthy Schools Inspection Report 2022**



Farfield Farm

Our school's award-winning farm project is an outstanding element of the school's provision - it really is unique and a very special part of the school's offer. We have large areas of fruit and vegetable planting, including a large orchard, two huge polytunnels, an accessible garden and raised beds. We also have chickens, pigs and bee hives.

Every child spends time on the farm, joining in with seasonal work such as sowing, planting, weeding, watering and harvesting. Some families have 'Community Garden' plots as part of the farm project.

Children receive regular Food and Cooking lessons as part of our drive to 'Be Healthy'.



"The whole school approach to food and healthy eating is outstanding at this school. There is a very positive culture and ethos around all aspects of food."

External Healthy Schools
Inspection Report 2022

Admission to School

Attendance at our school can usually begin in Nursery when your child is three. When over-subscribed, the school adopts the same admission criteria for Nursery as Leeds Children's Services uses for older children: siblings and proximity (children with acute special needs, 'Children Looked After' and those referred to us directly through Social Care have priority beyond this).

Places in full time Reception classes (from age 4) are allocated by Leeds City Council. Details can be found here: <https://www.leeds.gov.uk/schools-and-education/school-admissions/apply-for-a-primary-school>.

The Reception 'application window' is from early November 2024 to mid January 2025 for a place in September 2025. Don't miss this deadline and make sure that your nearest school is somewhere on your list of preferences.



Childcare

Little People Nursery - on our Junior site - provides child care all year round from 0-4, and their 'Fun Club' provision provides before and after school care for school age children as well as holiday provision. Telephone 0113 2566495 (private nursery) or 0113 2559233 (Fun Club) or visit www.littlepeoplenurseries.co.uk for more details.

Mrs Walton, the North building administrator, and our Children's Centre staff, also have details of excellent local child-minders. Little People or childminders can provide 'wrap around' services at the start and the end of the day.



For all childcare options locally, see: <https://parentportal.leeds.gov.uk/Synergy/ChildCare/>



Special Attention

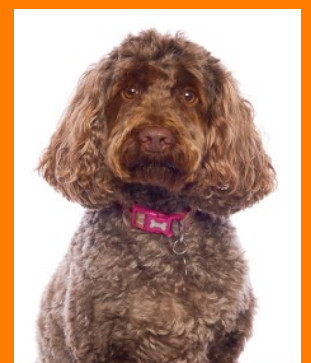
Every child is special, and every child is welcomed to our school. We aim to meet any child's special needs or disability wherever possible, and we have resources such as large care suites and platform lifts in order to help us to include as many children as practicable. We have a good local reputation for inclusion and a lot of experience and expertise around SEND.

Our staff identify children for whom established educational provision and intervention programmes are insufficient to secure appropriate progress. Where additional support is required, we will devise an Individual Provision Map and provide extra resources and interventions. If a child's special needs or disability are very significant, it may be possible to access further resources from Leeds or Bradford city councils. Regular contact is made with appropriate support services to help us with diagnostic assessments and educational programmes of work, and we have our own Speech and Language therapist in school for one day a week. Our work with children with SEND is led by Mrs Lucy Swindlehurst who can be contacted on lucy.swindlehurst@farsleyfarfield.org.uk

More information about our provision for SEND, and Leeds' 'Local Offer', can be [accessed on our website](#).

"The school provides exceptional support for pupils with special educational needs and/or disabilities (SEND)."
Ofsted 2023

"We wanted to thank you for all the support [child] has received and the progress he has made during his time so far at Farfield. We are particularly grateful (for how) proactive you have been with support as a school, whereas other parents and carers have clearly not had the same experience."
Infant parent



Zoey: the school therapy dog



“The school’s safeguarding arrangements... evidence some areas of exemplary practice which are to be celebrated.”

External safeguarding audit 2022

“..the school’s work to safeguard pupils is highly effective.”

OFSTED 2023

“As always, we are an extremely happy family who are forever grateful that our children get to experience such an amazing primary school. Thank you to every single member of staff and the PTA for another amazing year...We made the best decision when we decided that Farfield was the school we wanted!”

Reception and Y6 parent 2024

Partnership with Parents

Any teacher will be glad to meet with parents throughout the year although an appointment may sometimes be necessary for mutual convenience. There are two formal consultation evenings - usually in the autumn and spring terms - a brief mid-year report in March and an end of year report in July. If you have any concerns, please don't wait until a consultation evening - contact us as soon as possible.

Parents can expect weekly updates from class teachers via email and you may get a personalised letter when your child has a special moment...

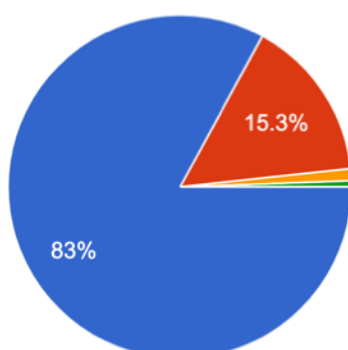
We encourage parents to help in school both in and out of the classroom in a variety of ways. Any help, whether it is a single gesture or a regular occurrence, is valued highly by the staff as there is always something to do in our busy school! Please contact the office if you would like to volunteer.

We have a **superb** PTA that raises significant sums for the school and puts on amazing events including our famous annual Camp-Over.

Parent Survey July 2024

Q17. Overall, how highly would you rate your child's experience at Farfield?

176 responses



- Excellent
- Good
- Satisfactory
- Poor
- Very poor



Key Contacts



Farsley Farfield
Primary School



Peter Harris
Headteacher



Dan Hemming
Deputy Headteacher



Kathryn Lace
Assistant Headteacher



Ruth Fain
Chair of Governors



Lucy Swindlehurst
SENDCO

All email addresses are forename.surname@farsleyfarfield.org.uk



Farsley Farfield Primary School

Cote Lane, Farsley, Leeds LS28 5ED

Tel: 0113 2058130 **E-mail:** office@farsleyfarfield.org.uk

www.farsleyfarfield.org.uk